



The Lowen

The Estates of Danbury Oaks - ELEVATION A



CALL FOR PRICING



2,961 SQ FT



5 BED



3.5 BATH



3-CAR GARAGE



DAYLIGHT BASEMENT

PLAN FEATURES

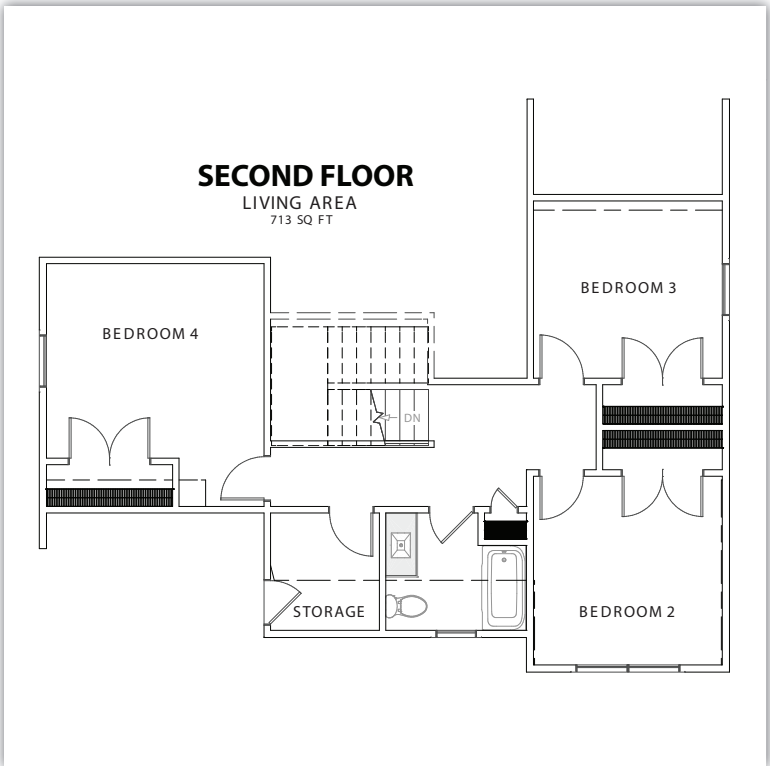
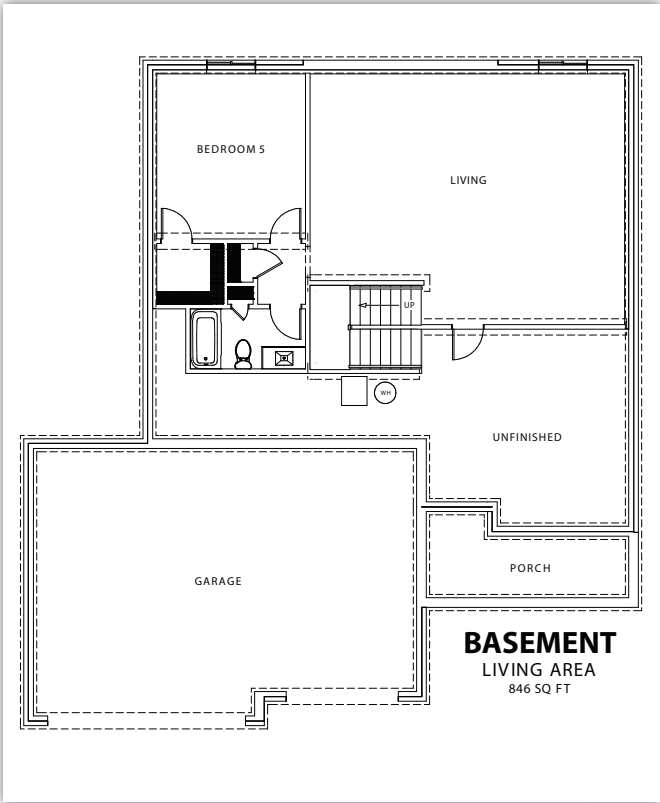
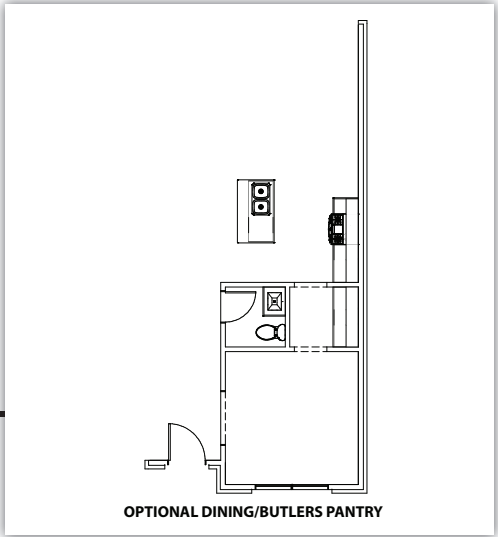
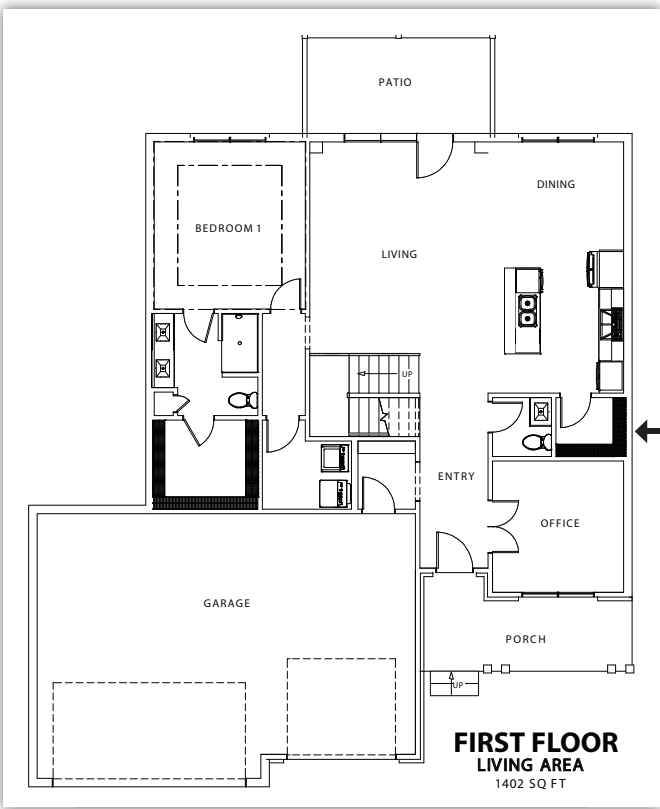
- Open Concept Living Space
- Split Floorplan
- Large Kitchen with Island
- Laundry Room
- Drop Zone
- Office Space
- Granite or Quartz Countertops
- Revwood Floors
- Covered Patio
- Stainless Steel Appliances
- Gas Furnace and Stove
- Primary Bathroom Tiled Shower
- Tile Backsplash
- Optional Dining with Butlers Pantry



LISTING AGENT:
 DETRA DAUGHTERY
 859 - 583 - 7492
 Detra@ThePaxtonGroup.com



Luxury
 COLLECTION
 Our plan. Your finishing touch.



NOTES:



It all starts with a conversation!

(812) 748-4040 | www.rybuilt.com



RVSD: 12/2/24