



# The Lowen

Heritage Estates - ELEVATION B



**CALL FOR PRICING**



**2,961 SQ FT**



**5 BED**



**3.5 BATH**



**2-CAR GARAGE**



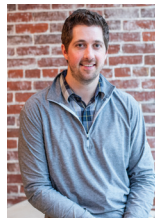
**DAYLIGHT BASEMENT**

## PLAN FEATURES

- Open Concept Living Space
- Split Floorplan
- Large Kitchen with Island
- Laundry Room
- Drop Zone
- Office Space
- Granite Countertops
- LVP Wood Floors
- Stainless Steel Appliances
- Gas Furnace and Stove
- Primary Bathroom Tiled Shower
- Tile Backsplash
- Optional Dining with Butlers Pantry



**LISTING AGENT:**  
 DETRA DAUGHTERY  
 859 - 583 - 7492  
 Detra@ThePaxtonGroup.com

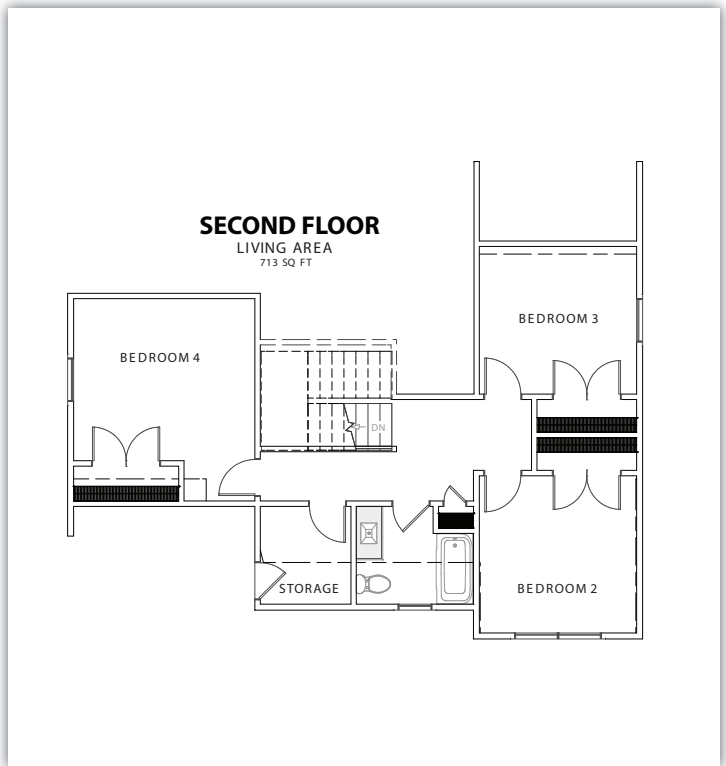
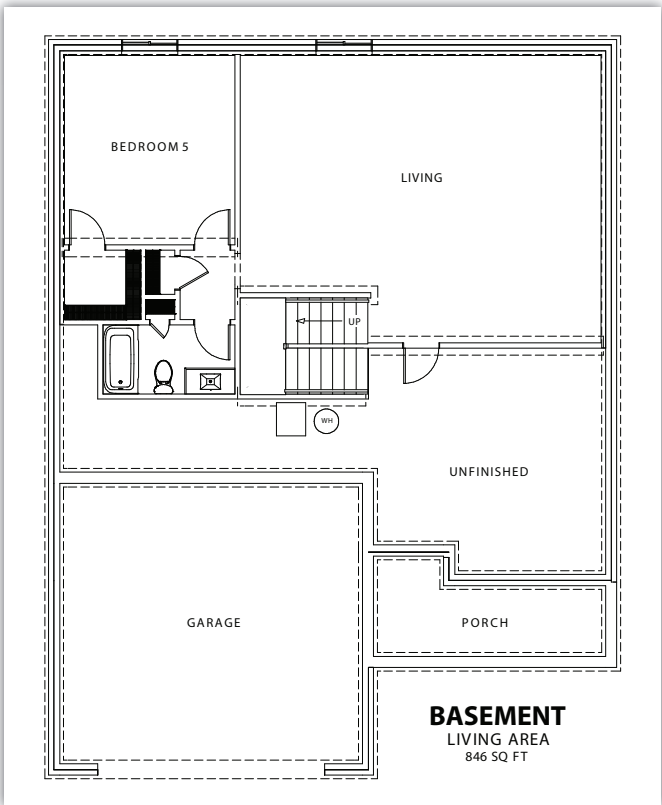
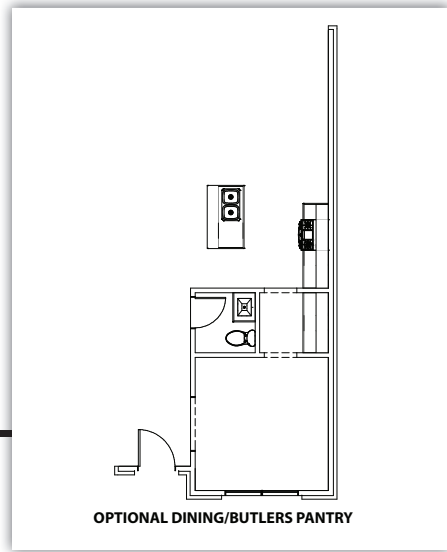
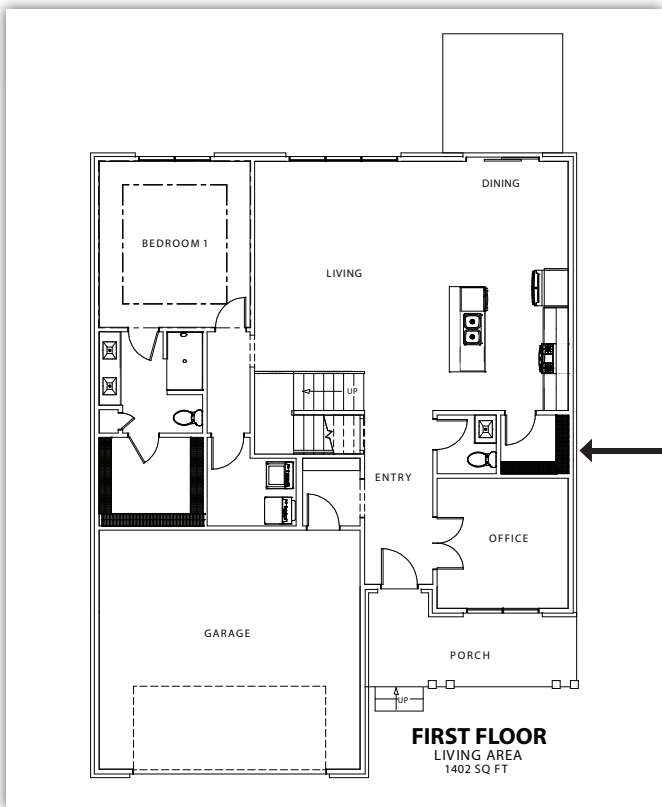


**LOCAL MARKETING PARTNER:**  
 TYLER STOCK  
 812 - 592 - 3402  
 TylerAStock@gmail.com



**COLDWELL BANKER**  
 MARTIN, MILLER,  
 LAMB REAL ESTATE

*Designer*  
 COLLECTION  
 Our plan. Your finishing touch.



**NOTES:**

---



---



---



---



**It all starts with a conversation!**

(812) 748-4040 | [www.rybuilt.com](http://www.rybuilt.com)

