



# The Lowen

The Estates of Danbury Oaks - ELEVATION A



**CALL FOR PRICING**



**2,773 SQ FT**



**4 BED**



**3.5 BATH**



**3-CAR GARAGE**



**DAYLIGHT BASEMENT**

## PLAN FEATURES

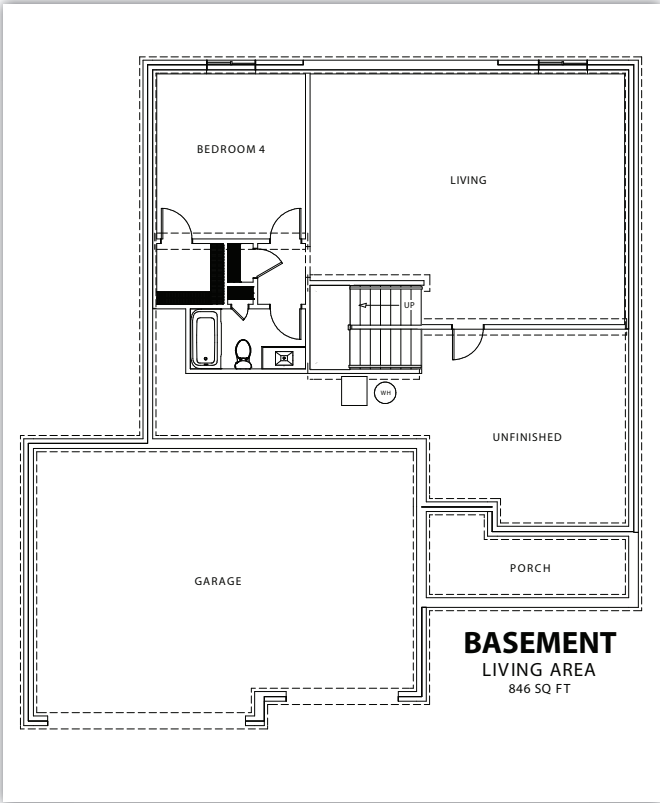
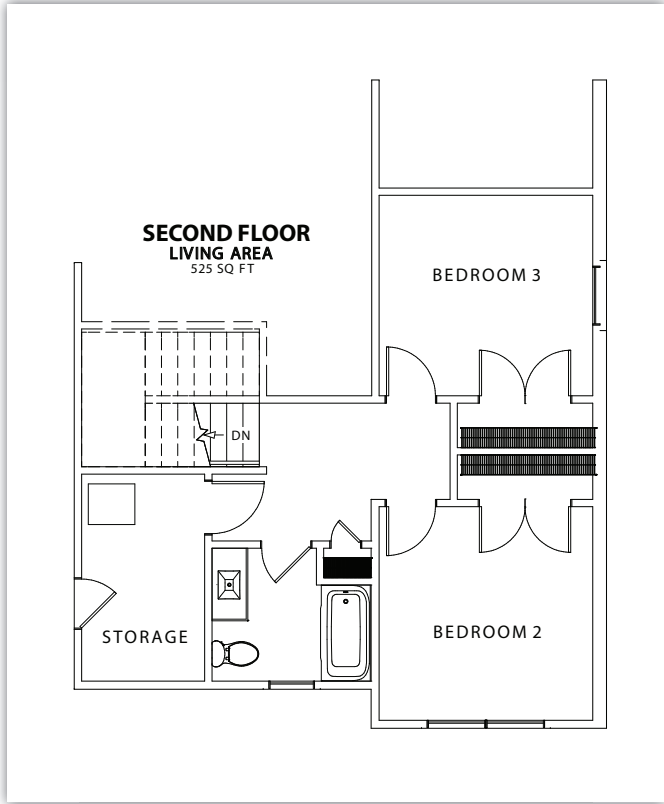
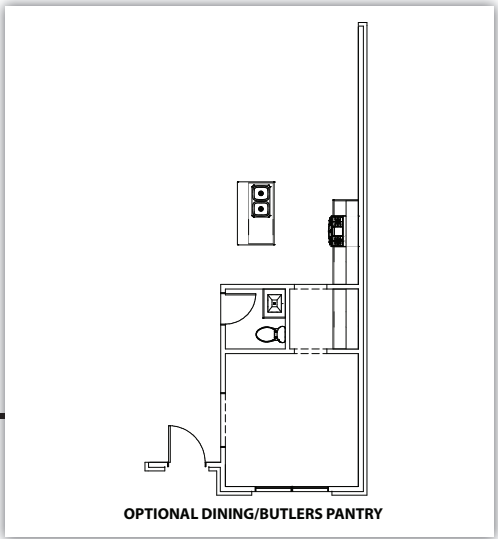
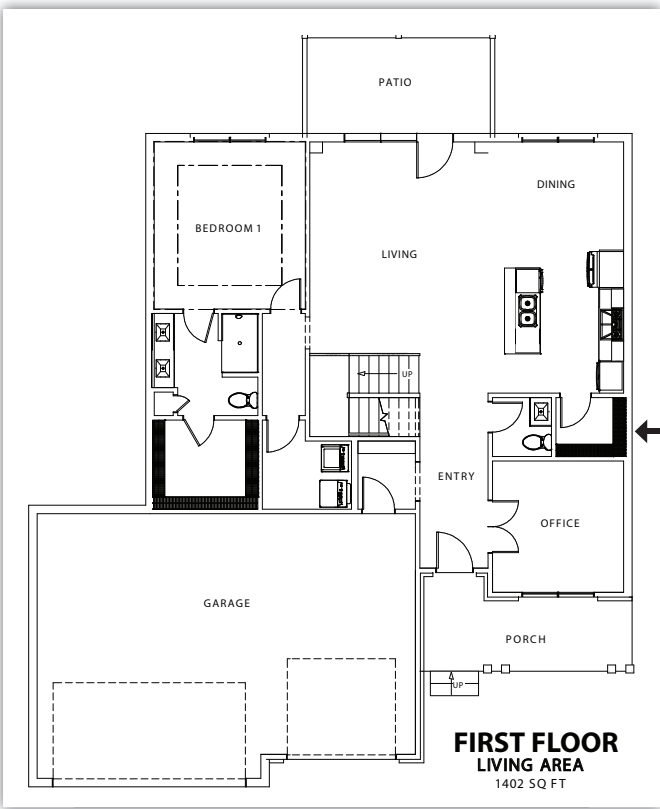
- Open Concept Living Space
- Split Floorplan
- Large Kitchen with Island
- Laundry Room
- Drop Zone
- Office Space
- Granite or Quartz Countertops
- Revwood Floors
- Covered Patio
- Stainless Steel Appliances
- Gas Furnace and Stove
- Primary Bathroom Tiled Shower
- Tile Backsplash
- Optional Dining with Butlers Pantry



**LISTING AGENT:**  
 DETRA DAUGHTERY  
 859 - 583 - 7492  
 Detra@ThePaxtonGroup.com



*Luxury*  
 COLLECTION  
 Our plan. Your finishing touch.



**NOTES:**

---



---



---



---



**It all starts with a conversation!**

(812) 748-4040 | [www.rybuilt.com](http://www.rybuilt.com)

