



The Lowen

Heritage Estates - ELEVATION B



CALL FOR PRICING



2,765 SQ FT



4 BED



3.5 BATH



2-CAR GARAGE



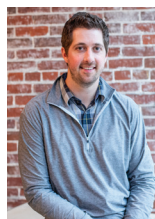
DAYLIGHT BASEMENT

PLAN FEATURES

- Open Concept Living Space
- Split Floorplan
- Large Kitchen with Island
- Laundry Room
- Drop Zone
- Office Space
- Granite Countertops
- LVP Wood Floors
- Stainless Steel Appliances
- Gas Furnace and Stove
- Primary Bathroom Tiled Shower
- Tile Backsplash
- Optional Dining with Butlers Pantry



LISTING AGENT:
 DETRA DAUGHTERY
 859 - 583 - 7492
 Detra@ThePaxtonGroup.com

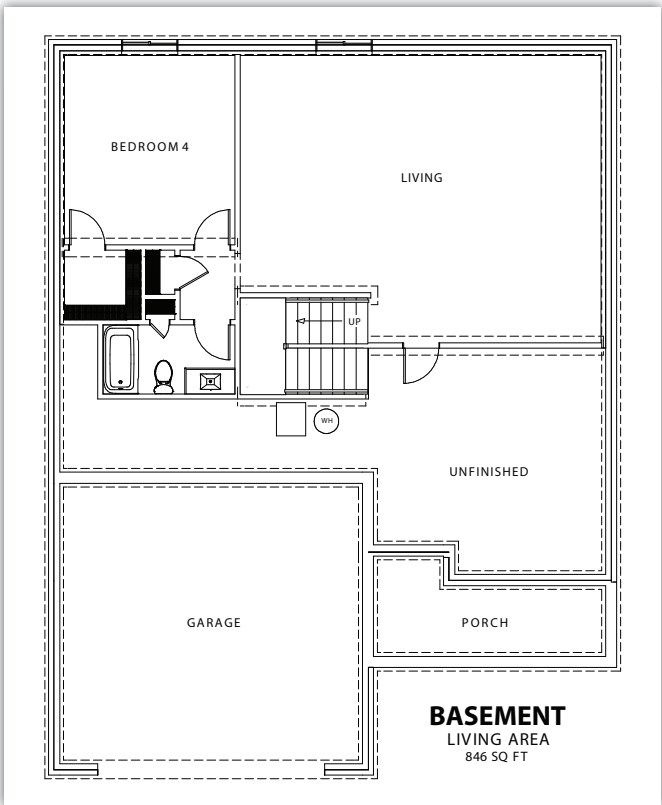
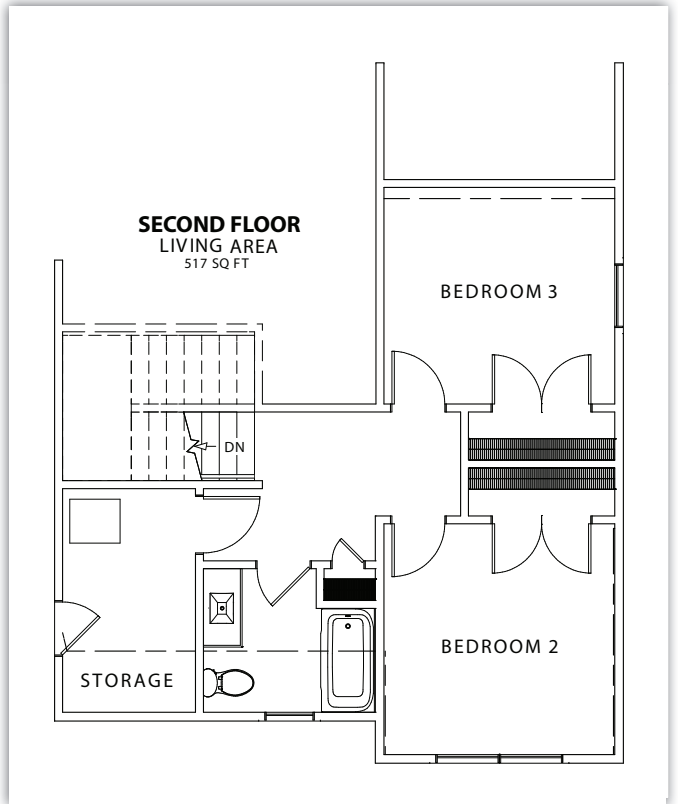
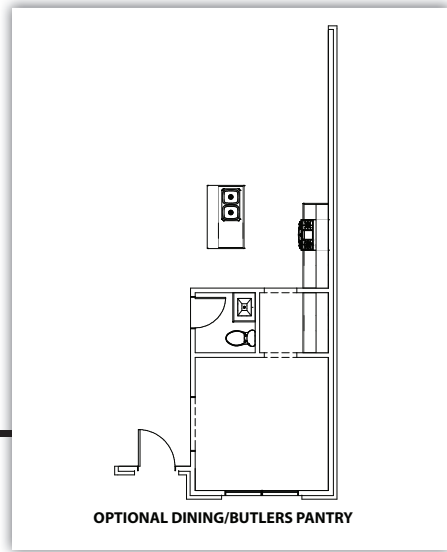
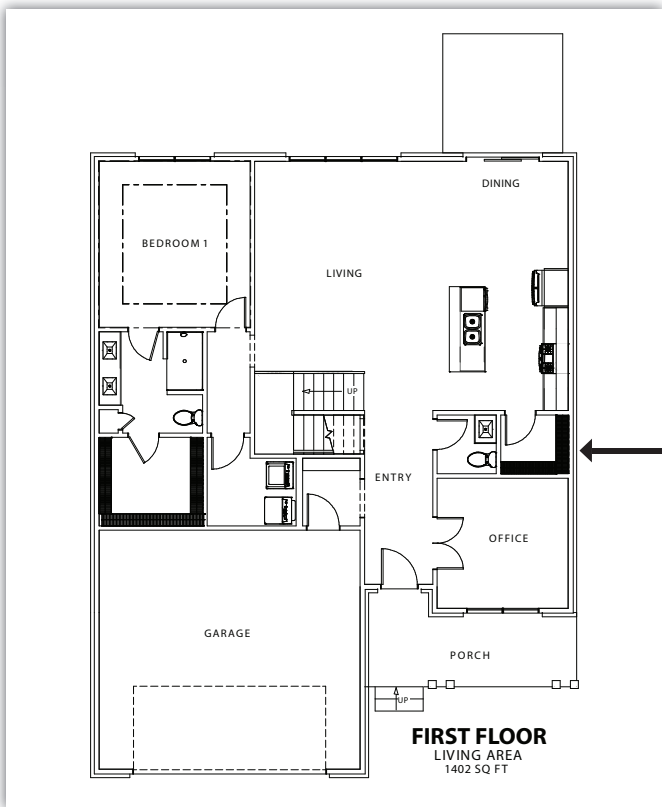


LOCAL MARKETING PARTNER:
 TYLER STOCK
 812 - 592 - 3402
 TylerAStock@gmail.com



COLDWELL BANKER
 MARTIN, MILLER,
 LAMB REAL ESTATE

Designer
 COLLECTION
 Our plan. Your finishing touch.



NOTES:



It all starts with a conversation!

(812) 748-4040 | www.rybuilt.com

